

# NCD ThinSTAR 200 Windows-based Terminal

Easy-to-manage network access to Windows applications and beyond

**NCD ThinSTAR™ 200 is a Windows-based Terminal that provides cost-effective access to Windows™ applications residing on Microsoft Windows NT Servers.**

## Highlights

- Lowest cost-of-ownership desktop for accessing Windows applications
- Simple, plug-and-play installation
- Flexible support for both Microsoft Remote Desktop Protocol (RDP) and Citrix Intelligent Computing Architecture (ICA®)
- Optional NCD ThinPATH™ Software enhances management, desktop functional support, and legacy connectivity
- Perfect terminal upgrade or aging desktop replacement for task-based users
- Fully compliant with Microsoft Windows-based Terminal Design Guide

## Lowest total cost of ownership

In today's competitive environment, Information Technology (IT) managers must provide users access to the information they need while managing IT costs. The NCD ThinSTAR 200 Windows-based Terminal helps to meet that challenge by providing the lowest total cost of desktop ownership available.

NCD ThinSTAR 200 offers a lower acquisition cost than other desktop alternatives. More importantly, since all application software and hardware upgrades take place on the servers, organizations save on administrative and upgrade costs, while providing users with instant access to new applications, memory, CPUs and peripherals. Using thin client technology from NCD, companies can maximize their IT investment.

## Easy desktop installation, management and administration

NCD ThinSTAR 200 is very easy to install. Installation simply requires plugging the terminal into the network. Even the local network address can be automatically assigned. This means users are up and running quickly using a technology that fits seamlessly into a company's current IT infrastructure.

NCD ThinSTAR Operating Software, containing a core Windows CE operating system, comes pre-loaded in flash memory on every NCD ThinSTAR 200. This provides instant start-up at power-on, eliminating the need to download software off the network. All flash resident software is easily upgraded via the network. Administration of the NCD ThinSTAR 200 is simplified by a series of configuration wizards found in NCD ThinSTAR Operating Software.

## Efficient, flexible network utilization

Network display protocol choices include Microsoft's Remote Desktop Protocol (RDP) and Citrix Systems' Intelligent Computing Architecture (ICA). Each of these protocols is optimized to deliver data over a variety of network media, such as LAN, WAN, and dial-ups.

The result is robust services delivered to each desktop combined with maximum network flexibility.

## NCD ThinPATH Software adds value

NCD ThinPATH™ is a family of software that enhances the functionality and flexibility of NCD ThinSTAR™ Windows-based Terminals or PCs accessing Microsoft Terminal Server via the RDP protocol.

NCD ThinPATH Software combined with the NCD ThinSTAR 200 provides powerful centralized management, desktop functional enhancements, and emulation to access virtually any legacy host.

## Built to meet varied user needs

Different users have different desktop needs. Whether it's the customer service or telemarketing specialist, an administrator, nurse or plant floor worker, the NCD ThinSTAR 200 is a customizable desktop.

The NCD ThinSTAR 200 is a perfect legacy terminal upgrade due to its affordability, ease of management and access to Windows and legacy applications.

## Simple, advanced design for superior reliability

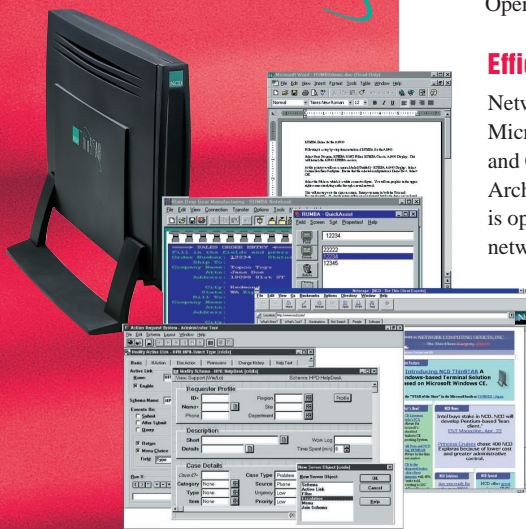
NCD ThinSTAR 200 contains a high-speed CPU and advanced graphics and I/O processors. With no moving parts, reliability equals a Mean-Time Between Failure (MTBF) rate at over 300,000 hours—the equivalent of only one system outage every forty years. And with the elimination of local storage, enterprise business applications will not be adversely affected by individual users installing applications, configurations or viruses.

## World-class technical support

NCD and NCD Technology Certified Resellers provide a decade of experience in thin client computing. Backed by formal service level agreements with Microsoft and Citrix, you can choose from a wide range of services that cover the entire thin client environment.

## NCD — The Thin Client Experts

NCD ThinSTAR 200 takes advantage of NCD's decade of experience in simplifying access to network-based information and applications. Our award-winning hardware and software combined with NCD's relationship with companies like Intel®, Microsoft®, IBM®, and Citrix®, provide the most flexible thin client solutions.

# NCD ThinSTAR 200 Windows-based Terminal

## Technical Specifications

### Hardware

|               |                                  |
|---------------|----------------------------------|
| CPU:          | 100MHz, MIPS 4300                |
| RAM Memory:   | 8MB standard, expandable to 32MB |
| Flash Memory: | 8MB                              |

### Software

|                      |  |
|----------------------|--|
| Operating System:    | Microsoft Windows CE   |
| Transport Protocols: | TCP/IP, PPP, RAS   |
| Display Protocols:   | Microsoft RDP, Citrix ICA  |
| Key Features:        | <ul style="list-style-type: none"> <li>• Setup Wizard for easy configuration</li> <li>• Built-in PPP dialer support for RDP and ICA</li> <li>• SNMP Agent</li> <li>• Terminal Properties Security</li> <li>• Mouse Speed Control</li> <li>• Software Volume Control</li> <li>• Ping Utility</li> </ul> |

### Flash Update Utility

NCD ThinSTAR Management Service (one per enterprise required)

### Display

|                     |                                  |
|---------------------|----------------------------------|
| Resolution Support: | Up to 1024x768                   |
| Refresh Rate:       | Up to 85Hz, DDC2 monitor support |

### Peripheral Ports

|                |  |
|----------------|--|
| Serial port:   | DB-9 RS232C up to 115.2K baud  |
| Parallel port: | DB25, PC compatible  |
| Mouse:         | 2-button PS/2 style  |
| Keyboard:      | Win 95 style <ul style="list-style-type: none"> <li>• US</li> <li>• UK</li> <li>• French</li> <li>• German</li> <li>• Scandinavian</li> <li>• Spanish</li> <li>• Kana</li> </ul> |

### Networking

- Ethernet (IEEE 802.3), TCP/IP
- 10BaseT
- RDP and ICA display protocol support

### Hardware Options

Security mounting bracket

All specifications are subject to change

### Physical Characteristics

|            |                       |
|------------|-----------------------|
| Dimensions |                       |
| Width:     | 45mm (1.8")           |
| Depth:     | 276mm (10.9")         |
| Height:    | 244mm (9.6") in stand |
| Weight:    | 1.2kg (2.6 lbs)       |

### Environmental

|                        |                                    |
|------------------------|------------------------------------|
| Power:                 | 20 watts maximum input power       |
| Operating environment: | 10°C to 40°C operating temperature |

### Optional Software

- NCD ThinPATH™ Software
- Management
    - NCD ThinPATH Manager
    - NCD ThinPATH Load Balancing
  - Desktop Support
    - NCD ThinPATH Plus
  - Emulation
    - NCD ThinPATH Connect
    - NCD ThinPATH X Windows
    - NCD ThinPATH Xware

### Server Operating Systems Supported

- Microsoft Windows NT Server 4.0, Terminal Server Edition
- Citrix MetaFrame™ thin-client/server software
- Citrix WinFrame thin-client/server software 1.6 or above

### Regulatory Compliance

Energy Star  
FCC-B  
UL  
CSA  
CE compliant  
TUV/GS  
VCCI  
C-Tick

### Warranty

36 month system warranty



### Corporate Headquarters

Network Computing Devices, Inc.  
350 North Bernardo Avenue  
Mountain View, California 94043  
Tel: 650-694-0650  
Fax: 650-961-7711  
Web: www.ncd.com

### For More Information

|                      |                       |
|----------------------|-----------------------|
| <b>North America</b> | <b>Germany</b>        |
| 800-800-9599         | 49-89-4587-2820       |
| <b>Australia</b>     | <b>Japan</b>          |
| 61-29-808-5455       | 81-3-3449-8151        |
| <b>Canada</b>        | <b>Sweden</b>         |
| 905-501-1800         | 46-18-601080          |
| <b>France</b>        | <b>United Kingdom</b> |
| 33-1-34-58-21-21     | 44-1-491-848300       |